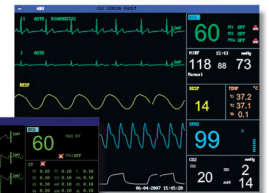


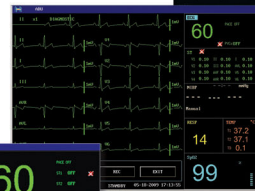


M9 / M9A Patient Monitor

- 12.1" / 10.4" color TFT display with maximum 11 waveforms
- Standard parameters: ECG, SpO₂, Resp, NIBP, 2-Temp, PR, optional parameters: 2-IBP, CO, EtCO₂, Multi-Gas/O₂ (Artema)
- 12 leads ECG analysis
- Respiration sidestream and mainstream EtCO₂ measurement for intubated and non-intubated patients
- Nellcor Oximax / EDAN SpO₂
- SpO₂ pulse-tone modulation (Pitch Tone)
- OxyCRG for neonatal monitoring
- 96 hours graphic and tabular trends of all parameters
- 120 seconds full-disclosure waveforms review
- Bi-directional communications with EDAN central monitoring system by wireless or wire network
- Pacemaker detection
- USB data storage and review
- Nurse call
- Built-in rechargeable Li-ion battery



EtCO₂ Waveform



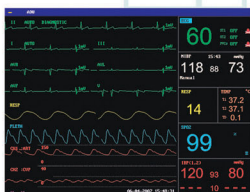
12 leads ECG analysis



Large font display



USB data storage and review



Maximum 11 Waveforms



Trend Screen Mode



OxyCRG for Neonatal Monitoring

M9 / M9A Patient Monitor



Technical Specifications

Safety

IEC60601-1 approved, CE marking according to MDD93/42/EEC

Dimension and Weight

Dimension: 322mm(W)x150mm(D)x285mm(H)
Weight: M9 3.9kg M9A 3.6kg

Operation Environment

Temperature: 5 ~ 40 °C
Humidity: 25% ~ 93% (non-condensing)
Power: AC 100 ~ 240 V, 50/60 Hz

Performance Specifications

Display: 12.1" /10.4" color TFT (M9 12.1", M9A 10.4")
Resolution: 800x600 dots

Waveforms: 13 waveforms maximum

Indicator: Alarm indicator
Power indicator
Charging indicator
QRS beep and alarm sound

Interface: Network port /USB port

Battery: Rechargeable Li-ion battery
Maximum 4.5 hours with full capacity

Recall: 1-96 hours trend recall

Alarm: 3-level audible and visual alarm

Recorder: Built-in, thermal array
3 trances

Paper width: 48mm

ECG Record speed: 25mm/s, 50mm/s
Lead Mode: 3 Leads (R, L, F or RA, LA, LL),
5 Leads (R, L, F, N, C or RA, LA, LL, RL, V),
12 Leads (optional) (R, L, F, N, C1-C6 or RA, LA, LL, RL, V1-V6)

4 selectable plus: x0.25, x0.5, x1, x2 cm/mV, Auto

Sweep speed: 12.5mm/s, 25mm/s, 50mm/s

CMRR

Diagnosis >100 dB (no 50Hz/60Hz software wave trap)
Monitor >110 dB (has 50Hz/60Hz software wave trap)
Surgery >110 dB (50Hz/60Hz software wave trap)

HR Measuring and Alarm Range

Adult/Ped 15 bpm ~ 300bpm
Neo 15 bpm ~ 350bpm
Accuracy ±1% or ±1bpm, which is greater
Resolution 1 bpm

Sensitivity ≥300 μV P-P

Differential Input Impedance ≥5 MΩ

Electrode offset potential ±300mVd.c. ±600mVd.c.

Leakage Current < 10 uA

ECG Signal Range ±6 mV (Vp-p)

ST Segment Monitoring Range

Measurement and Alarm -2.0 ~ +2.0 mV
Arrhythmia analysis: Yes
12 lead ECG analysis: 208 kinds diagnosis results
pace detection: Yes

RESPIRATION

Method Impedance between R-F (RA-LL), R-L(RA-LA)

Resp. Rate Measurement and Alarm Range:

Adult 0 rpm ~120rpm

Neo/Ped 0 rpm ~150rpm

Resolution 1 rpm

Accuracy ±2 rpm

Gain Selection x0.25, x0.5, x1, x2, x3, x4, x5

NIBP

Method Oscillometric
Mode Manual, Auto, Continuous
Measuring interval in AUTO Mode
1/2/3/4/5/10/15/30/60/90/120/240/480Min

Cuff Pressure measuring Range 0~290mmHg

Pressure Resolution 1mmHg

Pressure Accuracy

Mean error ±5mmHg

Maximum Standard deviation ≤8mmHg

Overpressure protection Dual Overpressure protections

Adult 297±3mmHg

Pediatric 240±3mmHg

Neonatal 145±3mmHg

PR

Measuring range 40~240bpm

Resolution 1bpm

Accuracy ±3bpm or 3.5% the maximum

SpO2

Measuring Range 0 ~ 100 %

Alarm Range 0 ~ 100 %

Resolution 1 %

Accuracy

Adult (including Pediatric) ±2 (70%~100% SpO2)

Undefined (0~70% SpO2)

Neonate ±3 (70%~100% SpO2)

Undefined (0~70% SpO2)

Pulse Rate

Measuring and Alarm Range 30~254bpm

Resolution 1bpm

Accuracy ±3bpm

Under Motional Condition ±5bpm

Nellcor module (optional)

Measuring Range 1 ~ 100 %

Alarm Range 1 ~ 100 %

Resolution 1 %

Accuracy

Adult and Low-perfusion ±2digits (70%~100% SpO2)

Undefined (0~70% SpO2)

Neonate ±3digits (70%~100% SpO2)

Undefined (0~70% SpO2)

Pulse Rate

Measuring and Alarm Range 20~300bpm

Resolution 1bpm

Accuracy ±3bpm

Low Perfusion 0.03 % ~ 20 %

TEMPERATURE (optional)

Channel 2

Measuring Range 0 ~ 50 °C

Sensor type YSI (B series) and CF-FI

Resolution 0.1 °C

Accuracy ±0.1 °C (20 ~ 45 °C)

±0.2 °C (0 ~ 25 °C, 45 ~ 50 °C)

IBP (optional)

Channel 2

Label ART, PA, CVP, RAP, LAP, ICP, P1, P2

Static Pressure Measuring Range -50~+300 mmHg (up to 350 mmHg)

Static Pressure Accuracy

±2% or 1mmHg which is greater

Dynamical Pressure Measuring Range -50~+300 mmHg

Dynamical Pressure Accuracy

±2% or 1mmHg which is greater

Measuring and Alarm Range

ART 0 ~ 300 (mmHg) PA 6 ~ 120 (mmHg)
CVP/RAP/LAP/ICP -10 ~ 40 (mmHg)

P1/P2 -50 ~ 300 (mmHg) Resolution 1 (mmHg)

CO2 (optional)

Method Infrared Absorption Technique

Measuring mode Sidestream or mainstream

Measuring range

CO2 0 ~ 150 mmHg

AwRR 2 ~ 150 rpm

Unit mmHg, %, Kpa

Resolution 1 mmHg, 0.1%, 0.1Kpa

CO2 1mmHg

INSOCO 1mmHg

AwRR 1 rpm

Accuracy

CO2 ±2 mmHg, 0 ~ 40 mmHg

Reading ±5%, 41 ~ 70 mmHg

Reading ±8%, 71 ~ 100 mmHg

Reading ±10%, 101 ~ 150 mmHg

± 1 rpm

AwRR Suffocation Alarm Delay

AwRR 10 ~ 40 seconds

Response time <3 seconds, includes transport time, risetime

BTPS (Body Temperature Pressure Saturated)

Sample Gas Flowrate

Stability 50ml/min

Short Term Drift Drift over 4 hours < 0.8 mmHg

Long Term Drift 120 hour period

O2 Compensation

Range 0 to 100%

Resolution 1%

Default 16%

CO (optional)

Method Thermolimitation Technique

Measuring range

CO 0.1 ~ 20L/min TB 23 ~ 43 °C

TI -1 ~ -27 °C

Resolution

CO 0.1L/min TB, TI 0.1 °C

Accuracy

CO ±5% or ±0.2L/min TB ±0.1 °C

TI ±0.1 °C

Alarm range 23 ~ 43 °C

Multi-gas (optional)

Technology Infrared absorption characteristic

Gas Sorts CO2, N2O, Des, Iso, Enf, Sev, Hal, O2

(Galvanic oxygen sensor)

Measuring range

CO2 0~10% O2 0~100%

N2O 0~100%

AwRR 2 ~ 100rpm Halothane 0~5%

Isoflurane 0~5% Enflurane 0~5%

Sevoflurane 0~8% Desflurane 0~18%

Respiration rate 4~ 60 ±1 bpm

Other Up to 3 waveforms display

Agent mixture detection

MAC value display

Standard configurations: ECG, NIBP, RESP, EDAN SpO2, 2-TEMP, Li-ion Battery
Optional configurations: Nellcor SpO2, 2-IBP, CO, EtCO2, Multi-Gas/O2, Thermal Recorder



Edan Instruments, Inc.

3F-B, Nanshan Medical Equipments Park, Nanhai Rd 1019#, Shekou, Nanshan, Shenzhen, 518067 P.R. China
Tel: 86-755-2689 8326 Fax: 86-755-2689 8330 www.edan.com.cn Email: info@edan.com.cn



All rights reserved.
Features and specifications are subject to change without notice.

ENG-PM-M9-V1.2-20090730