

F3 Technical Specifications

Physical Characteristics:

Dimensions	350mm x 300mm x 104mm
Weight	Approximately 3.0kg

Display Specifications:

Display	5.6 inches color TFT-LCD
Resolution	RGB 640 (W) x 480 (H)

Ultrasound:

Technique	Ultrasound Pulse Doppler with auto correlation
Pulse Repetition Rate	2 KHz
Pulse Duration	92 μ s
Ultrasound Frequency	1.0 MHz \pm 10%
FHR Measurement Range	50 bpm ~ 240 bpm
FHR Resolution	1 bpm
FHR Accuracy	\pm 2 bpm

TOCO:

Measurement Range	0% ~ 100%
Resolution	1%
Zero Mode	Automatic/Manual
Non-linear Error	10%

DECG:

Technique	Peak-peak detection technique
DFHR Measurement Range	30 bpm ~ 240 bpm
Resolution	1 bpm
Accuracy	\pm 1 bpm
CMRR	> 110 dB
Noise	< 4 μ Vp
Input Impedance	> 10 M (Differential, DC 50/60 Hz) > 20 M (Common Mode)

IUP:

Measurement Range	0 mmHg ~ 100 mmHg
Resolution	1%
Zero Mode	Automatic/Manual
Non-linear Error	\pm 3 mmHg

Auto Fetal Movement:

Technique	Pulsed Doppler ultrasound
Measurement Range	0% ~ 100%
Resolution	1%

Manual Fetal Movement:

Method	Remote marker
--------	---------------

Recorder:

Recorder Type	Thermal printer
Recording Paper	Z-fold thermosensitive paper (150 mm)
Real-Time Printing Speed	1/2/3 cm/min
Stored Traces Printing Speed	Up to 15 mm/sec
Resolution	8 dots/mm
Record Information	FHR1 trace, FHR2 trace, TOCO trace, AFM trace, fetal movement mark, event mark, AUTO-zero symbol, date, time, printing speed, ID, name, FHR2 Offset, etc.

Power Supply:

Operating Voltage	100V ~ 240V
Operating Frequency	50Hz/60Hz
Battery Type	14.8 V rechargeable Lithium-ion battery
Battery Power	4200 mAh/2100 mAh



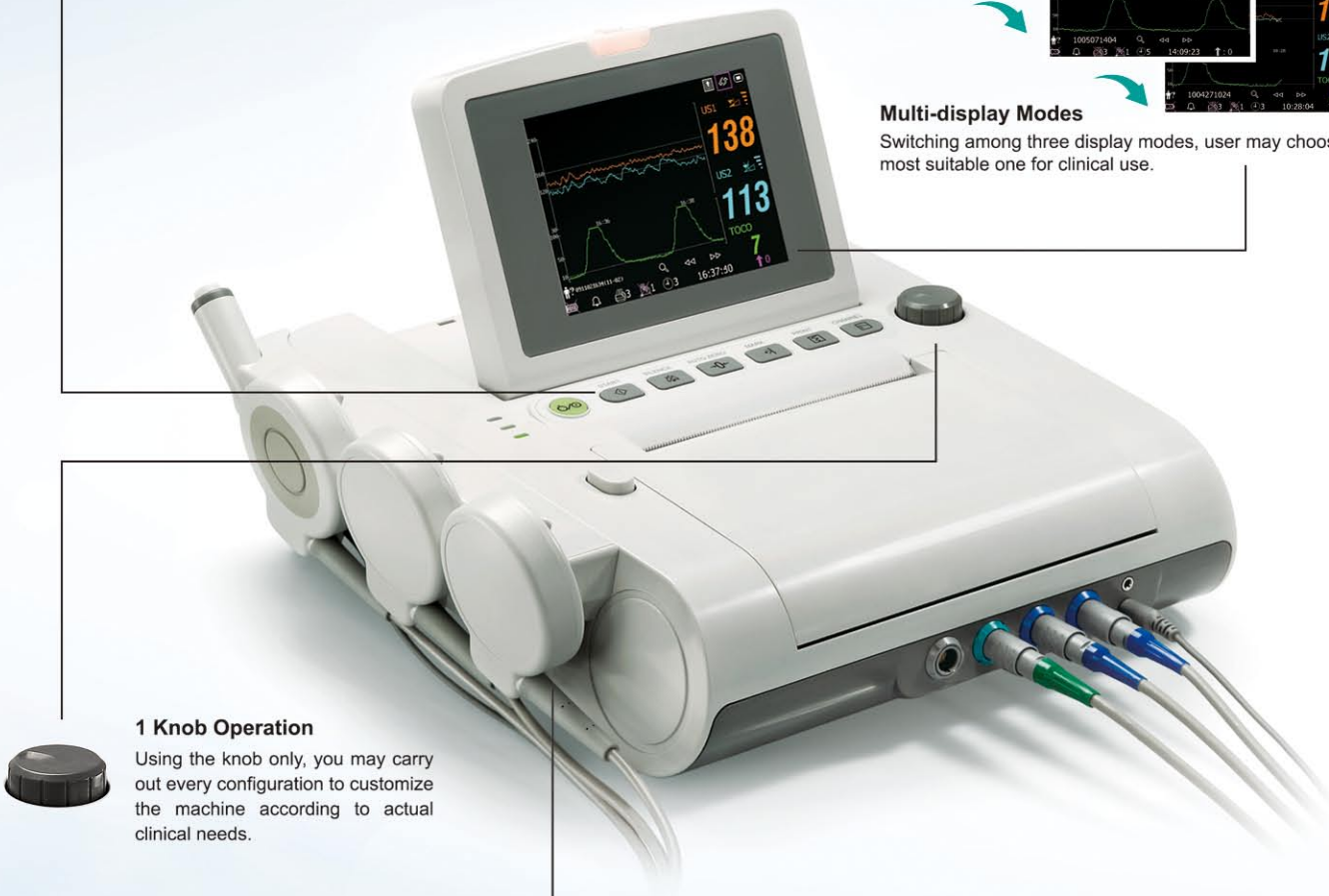
F3 Fetal Monitor

With its elegant design, bright color screen, and enhanced functionality, F3 fetal monitor would address the needs of obstetrical departments in both clinics and hospitals. F3 is amazingly light weight and portable, which makes it suitable for outpatients service. With the latest technologies from EDAN, F3 offers an extensive set of all the external monitoring parameters such as FHR, TOCO and fetal movement.

1 Button Operation
 Start button could be configured to integrate patient info and printing. This could help the doctor to simplify the work flow and work with 1 button only.



Multi-display Modes
 Switching among three display modes, user may choose the most suitable one for clinical use.



1 Knob Operation
 Using the knob only, you may carry out every configuration to customize the machine according to actual clinical needs.

1 MHz Waterproof FHR Probe
 The use of 1MHz probe enlarges the penetration and deepens the range of detection, which is significant and positive in fetal monitoring, especially for big pregnant women. Furthermore, it is also proved that the lower the detection frequency of the probe, the better protection to the tissues of fetus.



MFM-CNS Central Nursing Station
 Provides central monitoring solution with large capacity of 32 bedside fetal/maternal monitors including F3.

Convenient to Carry or Transport

- > Compact, portable and light weight (3kg)
- > Long life Lithium-ion battery for outpatient service

Easy to Read & Operate

- > 5.6" foldable color TFT screen
- > Large numeric and waveform display
- > Simple work flow with silicone keypad for operations

Advanced FHR Detection Technology

- > Signals Overlap Verification to differentiate twins FHR
- > FHR signal quality indicator helps optimize the probe position

Powerful Data Management

- > 12 hours built-in memory for seamless monitoring
- > MFM-CNS network for remote monitoring
- > Insight software for data management on PC

Flexible Printing Options

- > Built-in thermoprinter
- > Print on 150 mm width recording paper
- > 1/2/3 cm/min real-time printing speed
- > 15mm/sec fast printing speed of history traces

